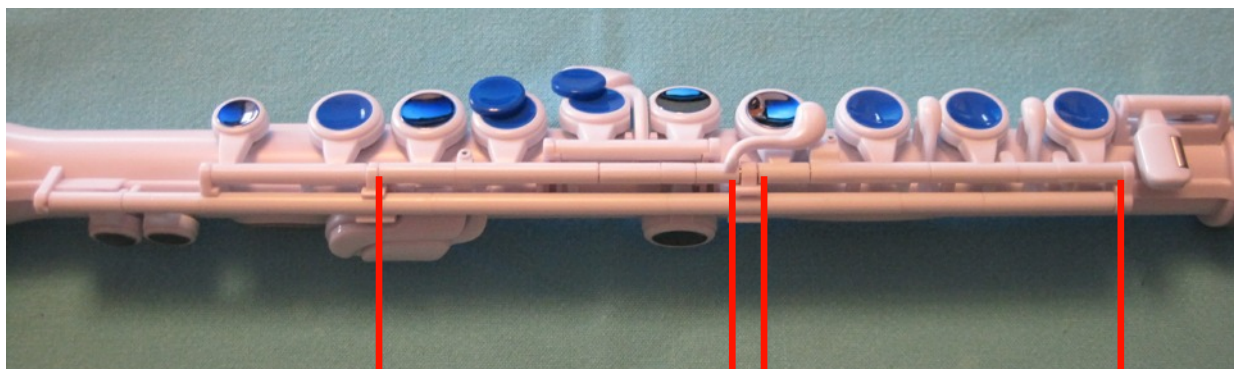


Removing the major key assemblies

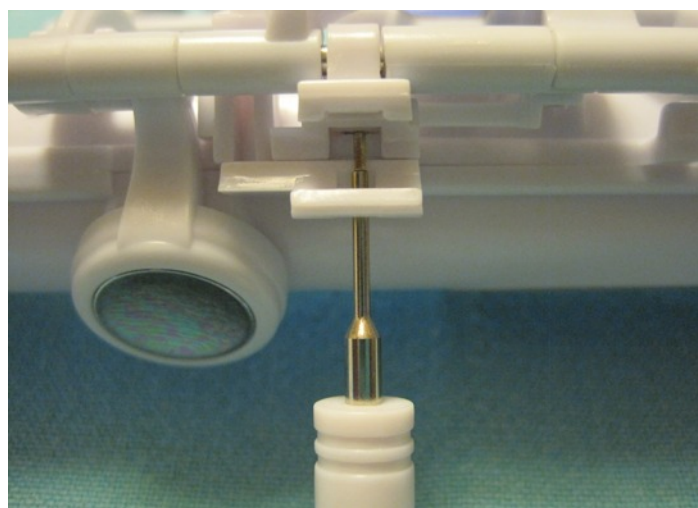


High Key Assembly

Low Key Assembly

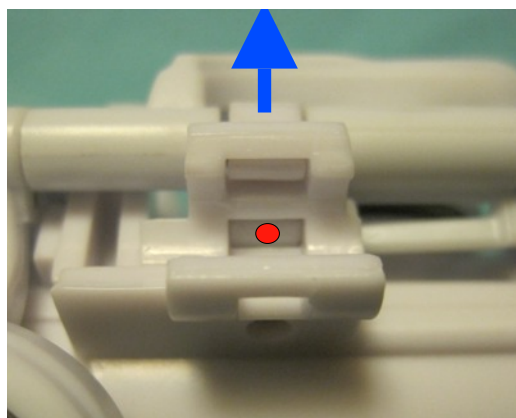


First remove the long trill key from the instrument as shown in previous instructions. You should also remove the G key assembly as shown in previous instructions. Now identify the “release” screw and back it out approximately 5 turns anti-clockwise using the screwdriver provided. Go gently with the screw to avoid burring.



Position the screwdriver as shown and push firmly at the point indicated by the red dot on the next image. The small clip which is retaining the key assembly rods will be released. In the direction indicated by the blue arrow.

Take care not to lose the small retaining clip.

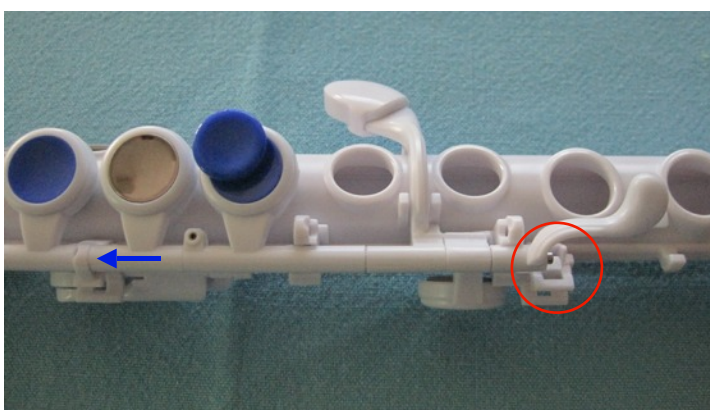


You may now carefully remove the low key and high key assemblies. Take care with the low key assembly as the E key is loose and may fall off the rod.

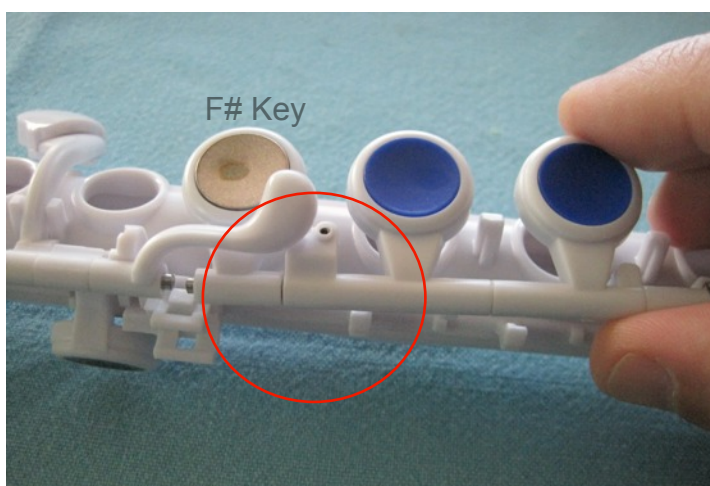
Returning the major key assemblies



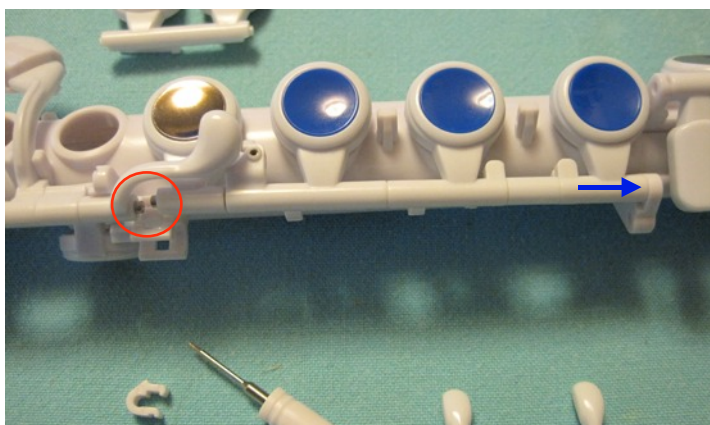
You can set the parts out on the bench as shown. Notice that the G key and long trill key are still detached from the body.



First position the high key assembly as shown. This is done by inserting the rod into the pivot hole indicated by the blue arrow. Then lay the assembly down, making sure all the springs are correctly positioned for the keys to function. The right hand end of the rod should be positioned approximately as shown in the red circle.

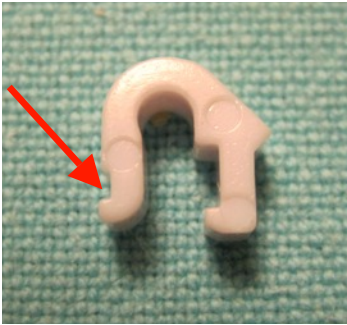


Now take the low key assembly with the right hand and “hook” the F# key behind the spatula key on the high key assembly as shown inside the red circle.

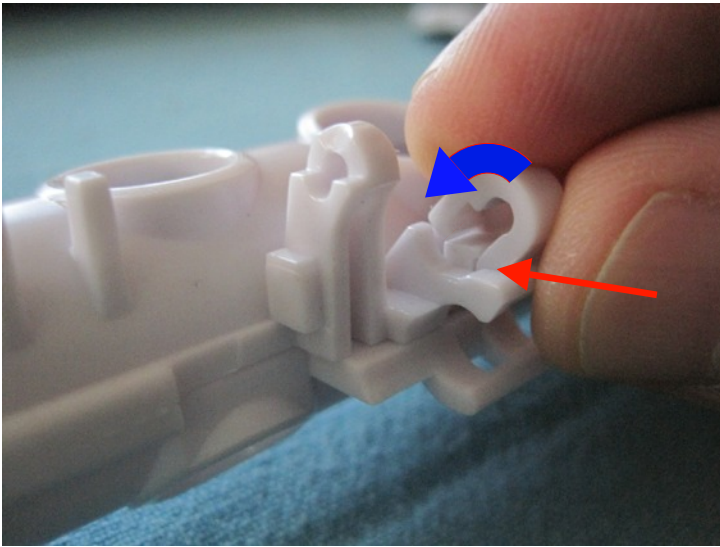


While keeping the F# key correctly positioned, insert the right hand end of the rod into the pivot hole as indicated by the blue arrow. Take care that the key springs are correctly positioned so that the keys will function after the clip is installed. The two rod ends should be roughly as shown in the red circle ready for the clip installation.

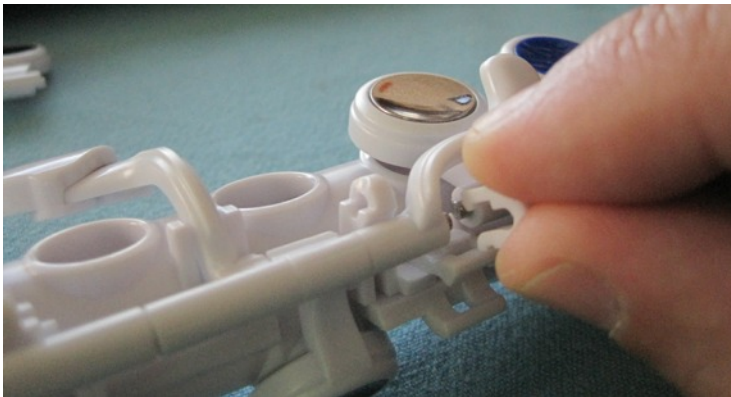
Installation of the clip



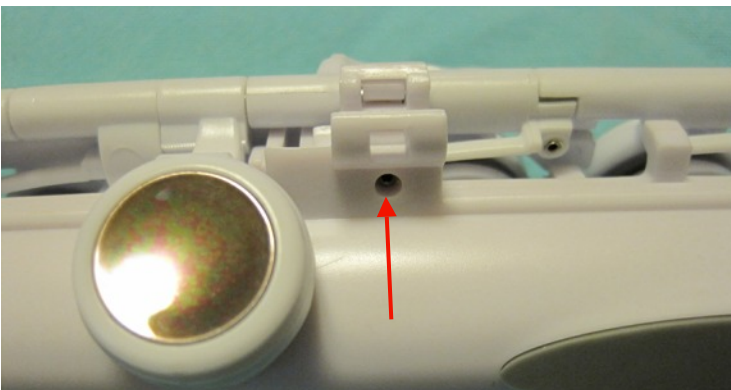
First examine the clip. You will see that there is a small undercut which is indicated by the red arrow. This undercut will be facing you when you install the clip.



For clarity, this image shows the clip being installed before the key assemblies are in place. First position the undercut as shown by the red arrow. Then rock the clip away from you until you hear it click into position as indicated by the blue arrow. You can practice a few times without the keys in place.



Now install the clip with the key assemblies in position as described on the previous page.



NOTE: The clip will not be completely secure until you have returned the "release screw" to its original position. Just 5 turns should be enough. No need to tighten it, the clip will now be secure.